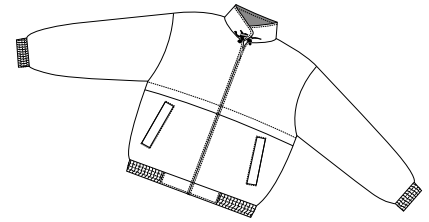
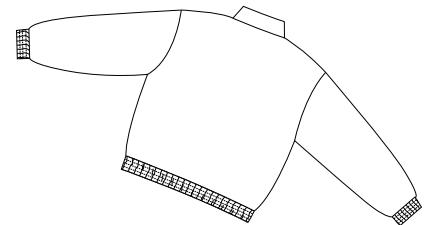


# Classic Poplin Jacket

PORT AUTHORITY®



Front



Back

## J753

- \* Cotton/polyester textured shell \* 100% polyester mesh upper back lining
- \* Underarm grommets \* Elasticized waistband
- \* Velcro/elastic adjustable cuffs \* Locker loop
- \* Lower slash pockets with flap and zip closure

**Care Instructions:**  
Machine wash cold gentle cycle. Tumble dry low. Cool iron if needed.  
Do not bleach.

### Finished Measurements in Inches

Size	XS	S	M	L	XL	2XL	3XL	4XL	5XL	6XL
Length	25	25.5	26	26.5	28	28.5	29.5	30	31.5	32.5
Chest	22	23.5	25	26.5	28	29.5	31	32.5	37	38.5
Sleeve	33	34.5	36	36.5	38	38.5	39.5	40	42	42.5
Collar Ht	3	3	3	3	3	3	3	3	3	3
Areas for Decoration	Left/Right Chest, Full Back			Port Pocket™			NA			

Collar measured from center back seam to top hem. Chest width measured 1" below arm hole.  
Body length measured from back neck seam to hem. Sleeve length measured from center back seam to hem.

### Colors

	Black/Black
	Black/Stone
	British Khaki/Black
	Dark Navy/Dark Navy
	Dark Navy/Red
	Hunter/Dark Navy
	Red/Dark Navy
	Stone/Dark Navy

**Please Note:**  
Colors shown are approximate and for reference only. For closest match see PMS colors, or for exact match, returnable samples and grommeted samples are available.

### Color Chart

Jacket Colors	Black	British Khaki	Dark Navy	Hunter	Red	Stone
Textile PMS	19-4005TC	17-1113TC	19-4010TC	19-5212TC	19-1762TC	14-4500TC
General PMS	426C	7536C	532C	5467C	201C	413C